

VELVET

Mutina

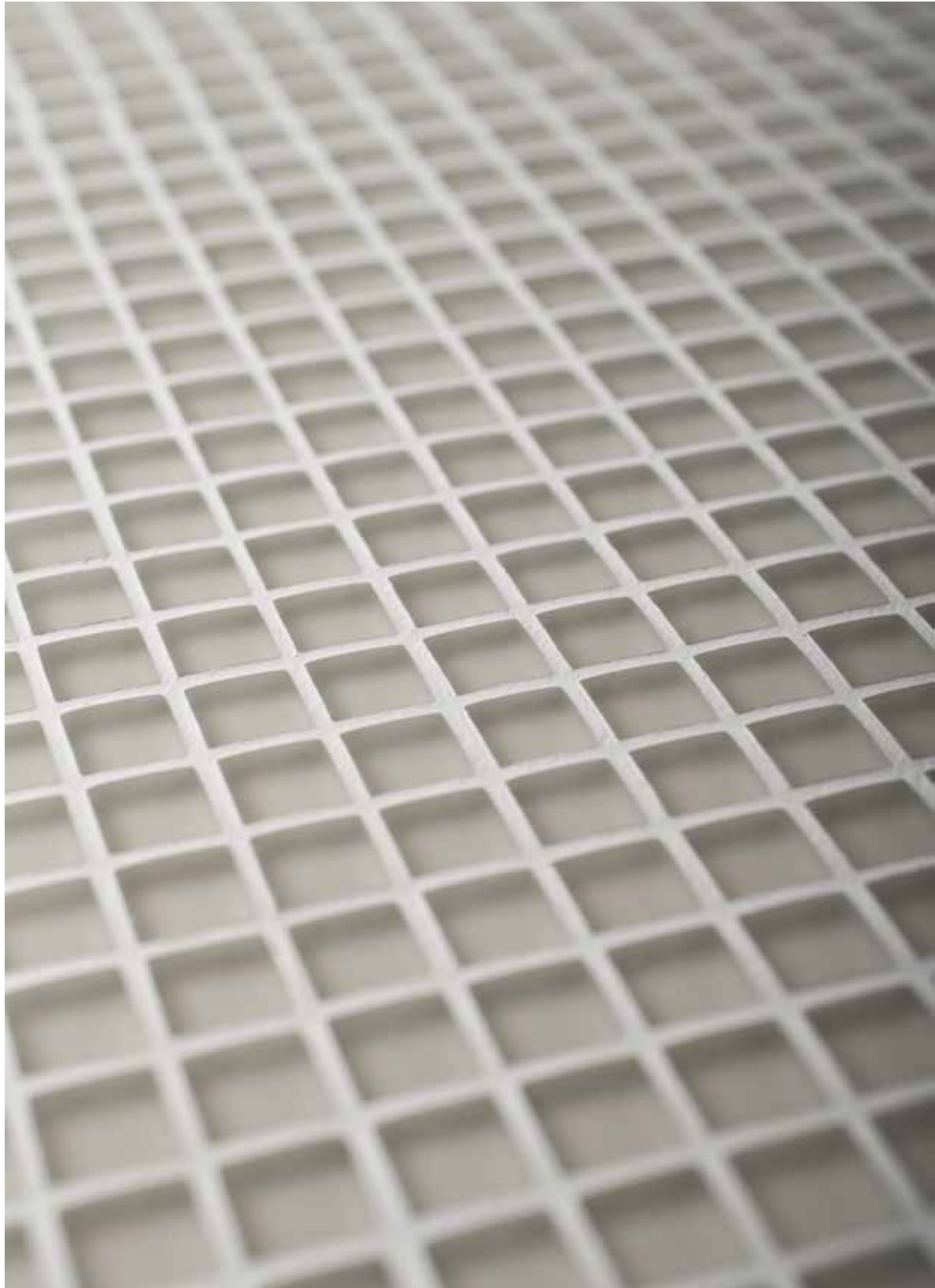
colours

sizes

technical features

packing

MU
TIN
A[®]



VELVET / sizes

design Silvia Giacobazzi - 2006

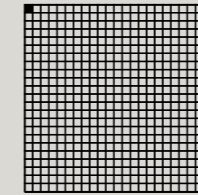
production artisanal

material mosaico vetroso rivisitato - updated glass mosaic

thickness 4 mm

*misure nominali - nominal sizes

1·1

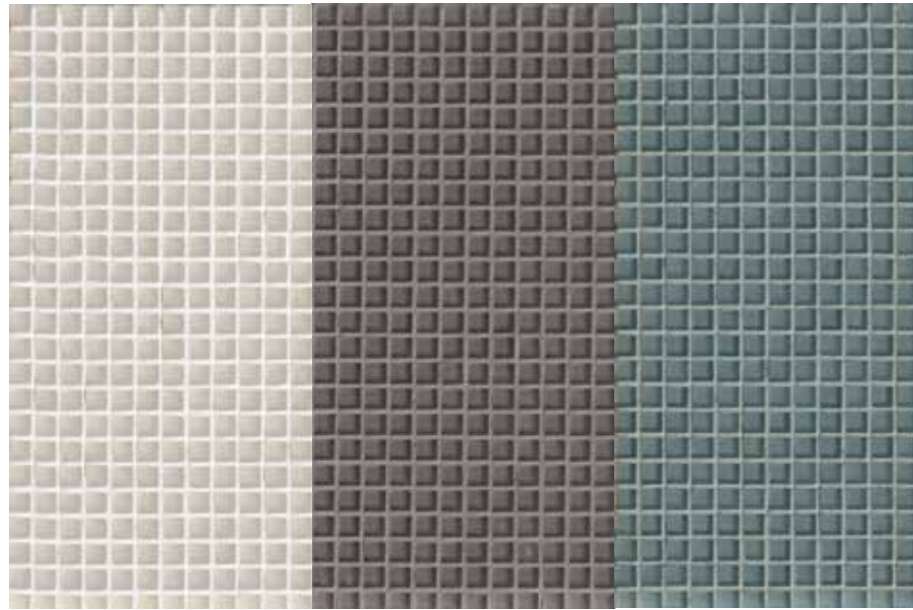


1·1 su rete 30·30

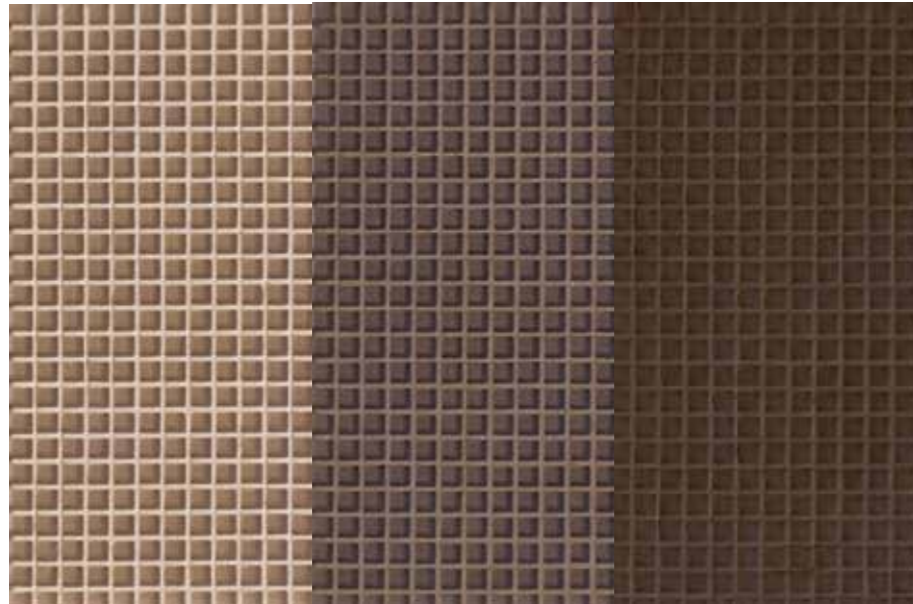
* $\frac{3}{8}$ "· $\frac{3}{8}$ " net *12"·12"

VELVET / colours

velvet white velvet grey velvet water



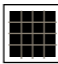
velvet sand velvet mud velvet brown



VELVET / technical features and packing

norma standard	caratteristiche features	valore prescritto value required	velvet
ISO 10545/3	assorbimento d'acqua water absorption	$E \leq 0,5\%$	nullo none
ISO 10545/9	resistenza agli sbalzi termici resistance to thermal shock	nessuna alterazione visibile no visible alteration	resiste resistant
ISO 10545/12	resistenza al gelo frost resistance	nessuna alterazione visibile no visible alteration	resiste resistant
ISO 10545/13	resistenza agli attacchi chimici resistance to chemical attacks	nessuna alterazione visibile no visible alteration	resiste resistant
DIN 51094	resistenza dei colori alla luce colours resistance to fading	nessuna alterazione visibile no visible alteration	resiste resistant

formato	pz-mq pcs-sqm	pz-scat. pcs-box	mq-scat. sqm-box	scat.-pal. box-pal.	kg-scat. kg-box	kg-pal. kg-pal.	mq-pal sqms-pal
30-30	11,11	11	0,99	90	7,28	656	89,10

 V1
variazione uniforme
uniform variation

MUTINA.IT

Follow us on

