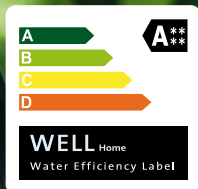


eco



the sky collection

**NOBILIS**

The Best Technology for Water

## TOP OF THE CLASS

Starting with a highly responsible production approach that aims to reduce environmental impact to zero and manufacture products capable of optimising the planet's resources, thus helping the consumer save water and energy on a daily basis. In this respect, Nobili has also recently obtained the "WELL 4 Star A" energy certificate for the Sky collection, approving and guaranteeing the total transparency of our product.



## A NEW PERSPECTIVE. WITH TWO DIFFERENT PERSONALITIES.

The Sky collection puts everyone in agreement: the dual stylistic personality of the single control wash basin tap (available in two different versions, with the Nobili Widd® 28 or 35 mm cartridge) reflects the advanced know-how of our trademark, a leader in innovation and technological efficiency. A highly efficient heart, with eco-sustainable characteristics of the highest order, designed and manufactured in our own production facilities. The Suno

works, where the Sky collection comes to life, is the most technologically advanced production complex in the entire sector, capable of producing over two and a half million taps per year. Choosing the Sky collection signifies recognising the true value of a product Made in Italy, recognised throughout the world as representing absolute quality and excellent reliability.





The style of the Sky collection follows the recent stylistic developments of the brand after the adoption of the Nobili Widd® immersion cartridge, which allows elegant clean lines to be drawn with a tall outlet flush with the mixer body. The variety of solutions available (six washbasin mixer taps, four bath solutions, six showers and 4 sink variants) highlights the precision and efficiency of the range.

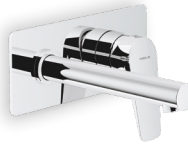
## WASHBASIN



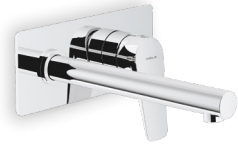
SYE97118/1CR  
Energy saving single control mixer tap  
SY97118/1CR  
Single control mixer tap



SY97116/1CR  
Single control mixer tap



SY97198CR  
Wall-mounted single control mixer  
tap with 150 mm spout



SY97198/1CR  
Wall-mounted single control mixer  
tap with 200 mm spout

## BIDET



SY97199CR  
Wall-mounted single control mixer  
tap with 150 mm spout



SY97199/1CR  
Wall-mounted single control mixer  
tap with 200 mm spout



SYE97119/1CR  
Energy saving single control mixer tap  
SY97119/1CR  
Single control mixer tap

## BATH



SY97110CR  
External single control mixer tap  
with duplex



SY97110/1CR  
External single control mixer tap



SY97010CR  
External thermostatic mixer tap  
with duplex



SY97010/1CR  
External thermostatic mixer tap

## SHOWER



SY97130CR  
External single control mixer



SY97030CR  
External thermostatic mixer



SY97100CR  
2-way flush fit single control mixer



SY97108CR  
1-way flush fit single control mixer

## SHOWER HEADS



AD138/44CR, AD139/10CR  
350 mm wall-mounted arm, swivel  
shower head ø 200 mm with rain jet



AD138/67CR, AD139/73CR  
160 mm wall-mounted arm, swivel  
shower head ø 160 mm with rain jet



AD138/67CR, AD139/54CR  
160 mm wall-mounted arm, swivel  
shower head ø 80 mm with rain jet,  
massage jet and comfort jet

## HAND SHOWERS



AD146/42CR  
Water connection with single jet  
shower head



AD146/18CR  
Directional support with single jet  
shower head



AD150/1CR  
Water connection



AD140/23CR  
650 mm wall rail with single jet  
shower head

## SHOWER COLUMN



SY97130/30CR  
External single control mixer, swivel  
shower head ø 200 mm with rain jet,  
single jet shower head



SY97030/30CR  
External thermostatic mixer, swivel  
shower head ø 200 mm with rain jet,  
single jet shower head

## SINK



SY97113/25CR  
Single control mixer tap  
with 360° swivelling body



SY97117CR  
Single control mixer tap with  
swivelling body and single jet  
pull-out shower head



SY97133CR  
Single control mixer tap  
with swivelling spout



SY97134CR  
Single control mixer tap  
with swivelling spout

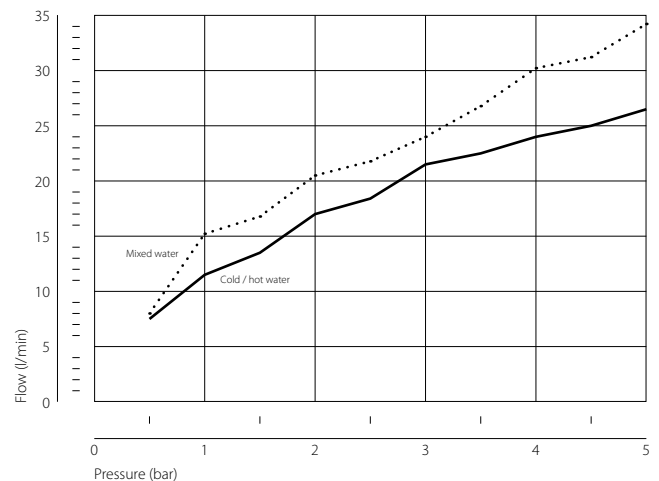
## THE HEART OF THE SKY MIXER

The Nobili Widd® 35 Eco immersion cartridge, with its mere 35 mm diameter, is devoted to maximum saving and respect for the environment. Conceived, designed and manufactured at our own production facilities, it more than satisfies eco-sustainable objectives and helps save energy and water on a daily basis. Its design specification and the top quality materials used guarantee maximum comfort and unequalled reliability.



Thanks to its innovative design philosophy, the Nobili Widd® 35 Eco full immersion cartridge (Water Immersion Dry Disc, 35 mm diameter) allows reliability levels to be reached that were unimaginable up until now (torsional strength 18 Nxm, high pressure resistance to over 70 Bar). The water reaches the top of the mixer body flowing around the profile of the cartridge, thus drastically reducing mechanical wear: there are no internal limescale deposits and no grease is washed away. In this way, the lubrication of the plates remains unaltered and, in addition, the low friction clutch system of the ceramic discs ensures an incredibly easy movement of the lever. The cutting-edge efficiency is also achieved in terms of respect for the environment: dynamic flow regulator, energy limiter, temperature limiter, and exclusive use of food-grade materials.

Nobili Widd® 35 Eco flow graph compiled by the Nobili laboratory on 15/10/2009. Test conditions: cold water at 15°C, hot water at 65°C.



## THE TECHNOLOGY

The technological efficiency of the Sky collection signifies that it can be used in an extremely environmentally friendly manner: the combination of the two EnergySaving and WaterSaving technologies limits the consumption of the mixer, thus saving money (over 200,00 € per year for a family of four, based on the average cost of water and natural gas in Italy) and zeroing carbon dioxide emissions due to the involuntary start-up of the boiler.



### Two versions

The washbasin mixer tap is available in two versions, each with its own style: slim body (42 mm diameter) and support base (right in the photograph) or with integral base (body diameter 50 mm) also available in the ECO version.



### Energy saving

The Nobili EnergySaving energy limiter delivers a flow of cold water (instead of mixed water flow) when the water is turned on with the lever at the centre position, thus avoiding boiler start-up and the consumption of hot water.



### Dynamic flow regulator

The Nobili WaterSaving technology halves the consumption of water by applying a brake to the opening action of the lever at the half flow position (-50%). Once this slight resistance has been overcome, the mixer is free to output all the flow available.



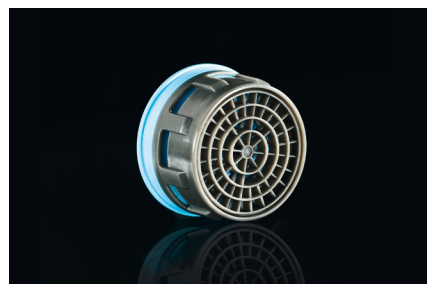
### Temperature limiter

Nobili EcoFresh technology prevents risks of scalding and at the same time reduces the consumption of hot water: the maximum temperature of the water output from the mixer can be varied by rotating a ring nut on the cartridge.



### Fluid movements

The low friction of the clutch type ceramic discs avoids friction between the plates when the mixer lever is turned to the closed position, thus reducing wear of the plates and guaranteeing the soft fluid movement of the lever.



### 5 l/min flow limiter

Nobili has chosen the exceptional quality of the Neoperl® group, fitting the Sky collection with the Cascade® aerator. In addition to the aerator fitted to the product, the pack also contains a second aerator with a 5 l/min flow limiter.



### A brilliant finish

The gleaming polished finish is guaranteed by chrome plating values higher than the market standard: 15.0 µm of Nickel and 0.5 µm of Chrome. All the processes are carried out at our own factories in full compliance with environmental standards.



### Parigi® Parinox® Softpex® hoses

The first flexible pipe approved anywhere in the world, thanks to its superior internal hygiene properties, its optimum resistance to temperature and pressure and its improved flexibility compared to pipes in traditional PE-X.



### Support flange

The flange type support supplied with all our kitchen mixer taps extends the bearing area over the sink top and greatly increases stability, reducing any oscillation in particularly thin mounting surfaces.





**100,000 m<sup>2</sup>**

internal production space



**2,600,000**

products per year



**100%**

made in Italy



**300**

work centres



**3**

ecological galvanic plants



**9,000**

photovoltaic modules

CARLO NOBILI SPA RUBINETTERIE

via novara 29, 28019 suno (no) italia

office +39 0322 885885

fax +39 0322 858091

mail [info@grupponobili.it](mailto:info@grupponobili.it)

web [grupponobili.it](http://grupponobili.it) **NEW**

ACATASKY/UK

strategy, creative management, texts: marco venzano

setting photography, stylist: studio varianti (varianti.it)

technical photography: widestudio (widestudio.it)

edition: january 2015



#nobilisky

**NOBILI**  <sup>®</sup>  
The Best Technology for Water

